

..

2015.



2016



	3
	4
	5
	6
	7
	8
	10
	11
	12
	14
	15
	16
	18
	19
	20
2015.	43



” “ . . . ,

, 2015. ,

, 27.675.109m³ ,

, 17.298.000m³, 39,1%

2014. 37,5% .

16.879.153 16.908.895 ,

1,7%. ,

29.742 . 10%.

” “ . . . 2015.

2014. , ,

” - “ ”

2014. “.

KfW (,

2014. 2015. ,

ISO 9001:2008, ISO 14001:2009 HACCP .

, 2015. .

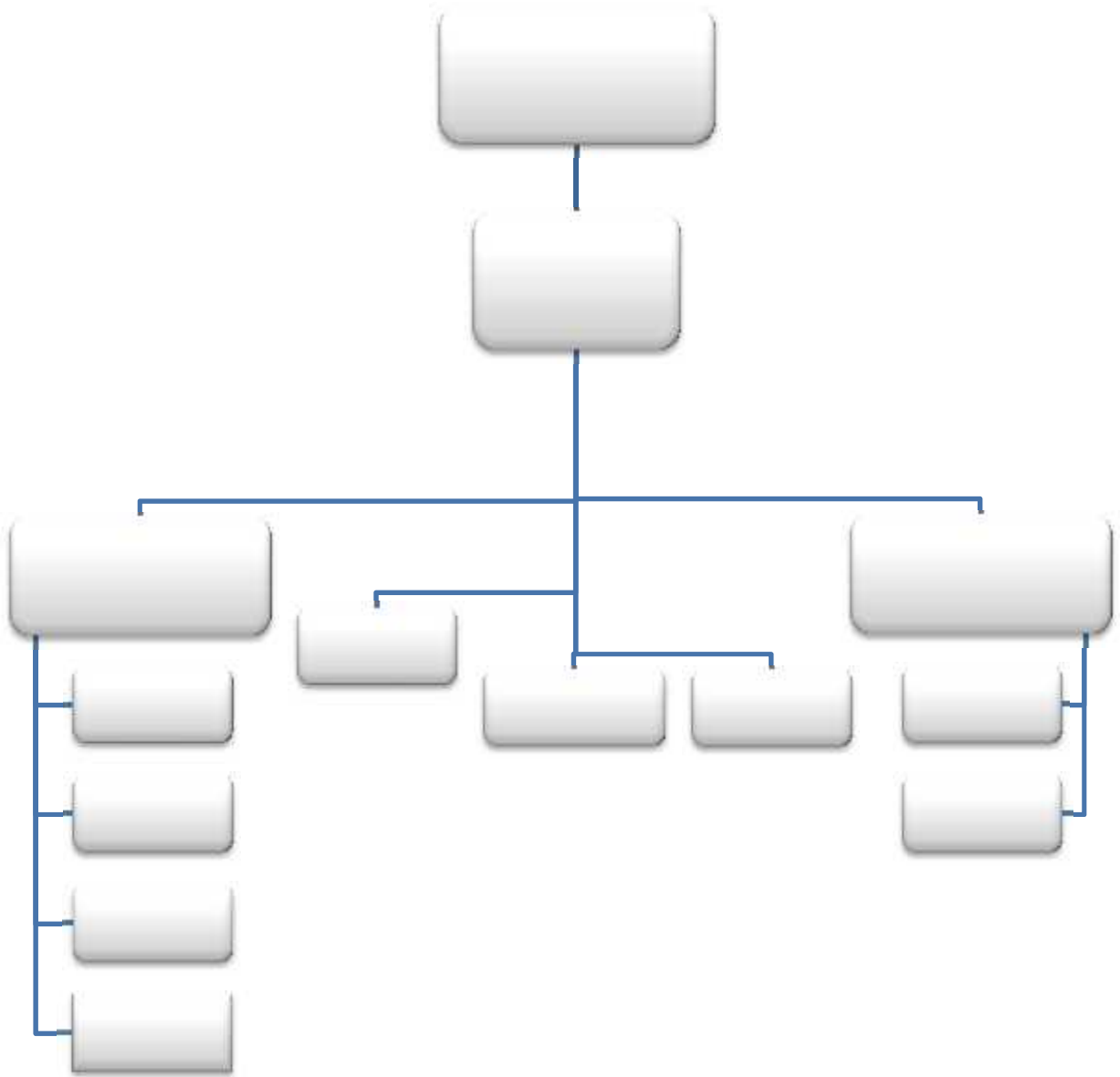
, ,

” “





- , :
:
- , .
:
- , . . , ,
➤ , . . , ,
➤ , . “ ,
➤ , . “ ,
➤ M , . “ .
:
- , . . , ,
➤ , . . , ,
➤ , . “ .
- O** :
➤ , . “ ,
➤ - , . “ ,
➤ , . , .
:
- , . .
:
- , . .





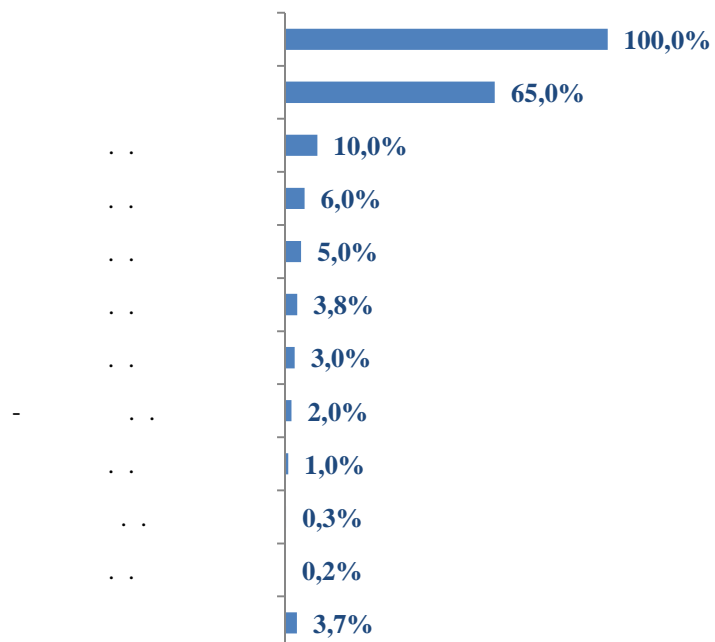
” “ . . . , , 1 o 18.08.2005.
 35.434.161,00 , 35.434.161 ,

VDBL-R-A.

, 31.12.2015. **0,50**
17.717.081 .

<i>VDBL-R-A</i>	<i>2014</i>	<i>2015</i>
	0,00	0,00
	0,500	0,500
31.12.	0,500	0,500
	0,00%	0,00%

2015. :



0,008 , 2,26KM, (EPS) 2015.
 0,2215.



31.12.2015.

330

:

2015	
1	0,3%
4	1,2%
2	0,6%
3	0,9%
48	14,5%
9	2,7%
72	21,8%
56	17,0%
85	25,8%
44	13,3%
6	1,8%
330	100,0%

58 17,6%,
25,8%
72 21,8%.

51 40,3%.
40
33%
60 6,67%.

		2014		2015	
18	30	29	8,8%	23	6,97%
31	40	78	23,8%	86	26,06%
41	50	86	26,2%	88	26,67%
51	60	114	34,8%	111	33,64%
	60	21	6,4%	22	6,67%
		328	100,0%	330	100,0%

11

2015.



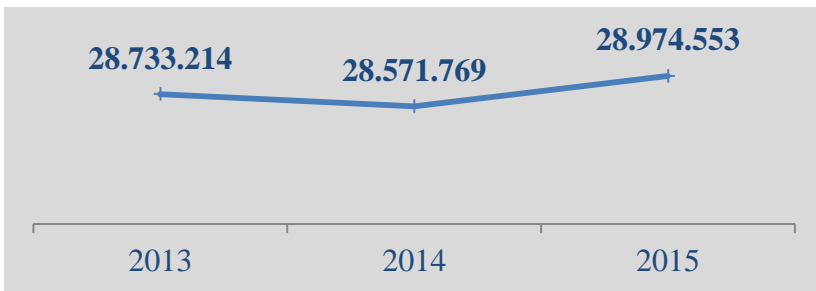
2015. 28.974.553m³, 27.675.109m³

2015. 402.784m³

1,4%,

KfW

(m³):



2015.

4,2% 834.093m³,

5,5% 472.052m³

2015.

, 1,4% 40.743m³

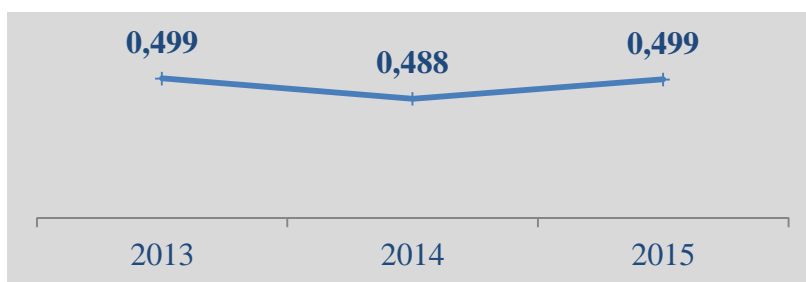
	2013	2014	2015
	19.489.838	19.034.588	19.868.681
	8.736.786	8.986.706	8.514.654
" "	506.590	550.475	591.218
	28.733.214	28.571.769	28.974.553

28.974.553m³ 2015.

14.446.151kWh

0,499kWh/m³, 3,6% 514.448kWh,

(kWh/m³):





, 2013 - 2015. :

<i>E</i>	(kg)	2013	2014	2015
(Cl)		38.219	38.349	35.803
Al-		135.731	193.733	148.956
Na-		568	636	1.067
(O ₂)		80.000	0	43.000
-	(CO ₂)	285.000	255.000	343.000

Al-
(),
44,7 30% Al- .
2015.



2015. 0
 ,
 ” “,
 ,
 4.841
 4.792 4.749
 ,
 2.832 2.832
 6
 (459).

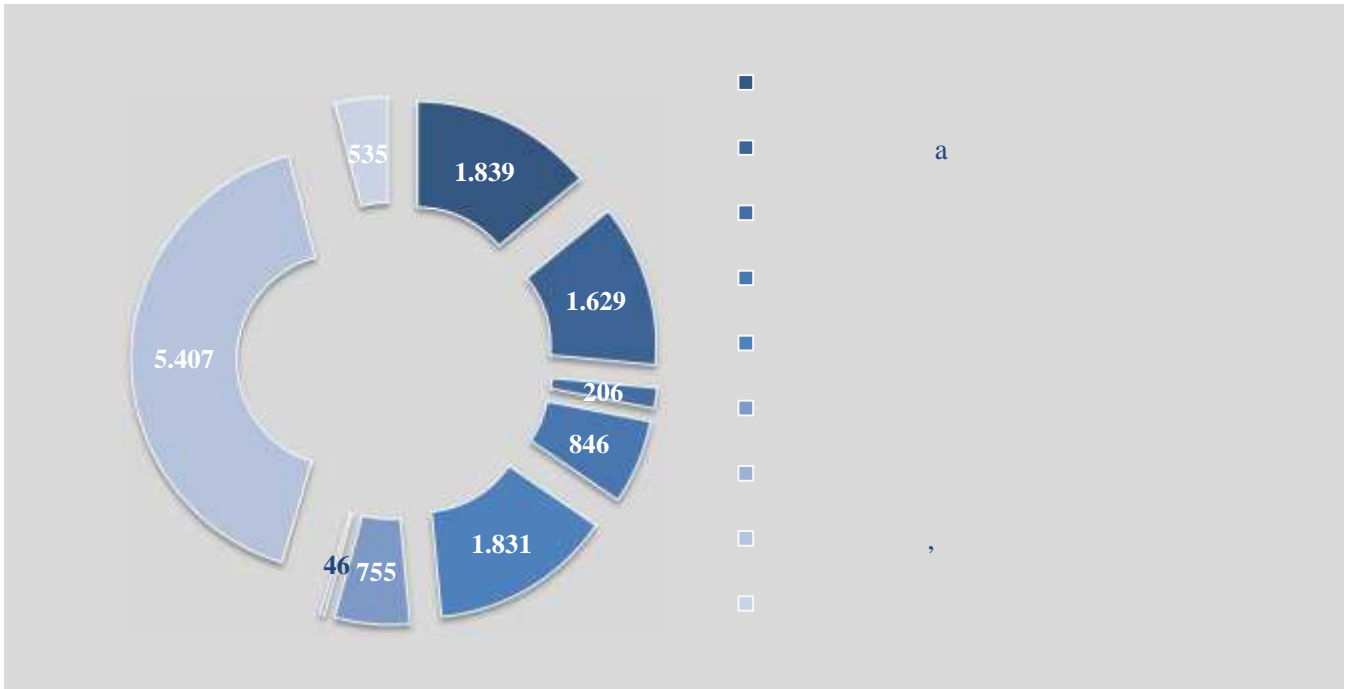
2015. :

	—	25
” “	,	5
		5
” “		2

,
 ,
 (495),
 (610), (536)
 (236) 78



2015. :



2015. 1.839 , , 535
 . 846 , 535
 . 206 ,
 (89) (103).
 (238 17.516m
), 2015. ,
 ” “ , 364
 10.118m . 9
 , 10.459m ,
 , 44.139m.
 2015.
 , 4.349 1.058



,
 ,
 ,
 :
 : (43),
 (476),
 (21),
 (32), (23),
 (546). 4.965m
 574m
 : (23),
 1.374m,
 8.991m 4500m. 9.309m ,
 700m () ;
 , , 958 717
 () . 83
 18 ;
 ,
 493 ,
 (27.160),
 (12) 2015. .
 ()
 ,
 (asset



management)

(benchmarking).

EBC IBNET,

: <http://www.danubis.org/bih>.

ISO 9001 ISO 14001

(,),

2015.



2015. :
- :
- (Symantec end point);
- „“
(,);
- ;
- „backup“ ,
- :
- „WEB“ „mail-a;
- ;
- ,
- / .
- - ,
- ;
- :
- , ,
- „“ ;
- ISO 9001 -



2015. :
 - 99% ;
 ;
 ;
 , 11.406 ;
 , 2.119 ;
 - 1.829 ;
 - 1.525

2015. , , 17.298.000m³ . :

(m ³)	2014	2015	2015 (%)
	7.143.351	6.920.182	40,0%
/	5.320.045	5.739.897	33,2%
	811.951	982.424	5,7%
/	2.776.207	2.783.233	16,1%
	467.754	510.102	2,9%
	352.793	362.163	2,1%
K	16.872.100	17.298.000	100

2015. 7.727.915 m³.

(m ³)	2015	2015 (%)
	2.228.365	28,8%
/	3.815.112	49,4%
	484.957	6,3%
/	1.199.481	15,5%
K	7.727.915	100



2015. ,

2015. 493 , ,

, , ,

2015. 39,1%

37,5%. 2015. (m³):

27.675.109				
			17.298.000	
		17.298.000		17.298.000
			0,00	
	18.903.062			
			828.912	
		1.605.062		
			776.150	
			387.855	10.377.109
		744.626		
		356.771		
	8.772.047		37,50%	
	31,70%	8.027.421		
		29,01%		



1,6%,

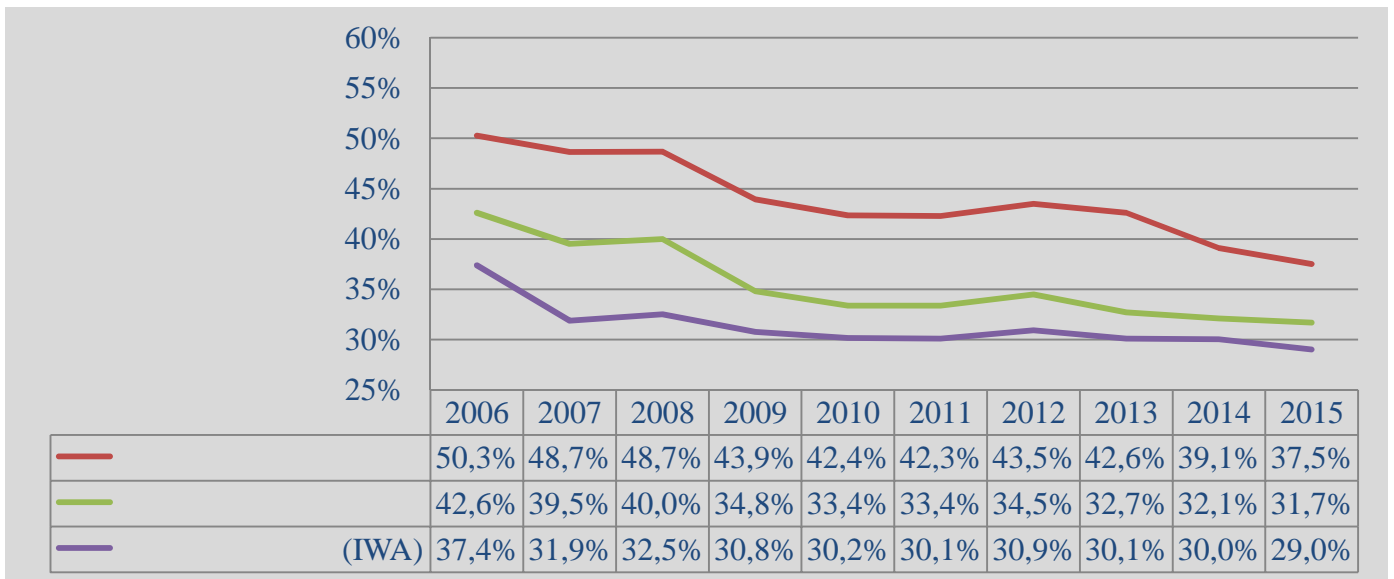
40%,

5%.

10.377.109m³ , 8.772.047m³ 31,70%

1.939.322m³ 7,00%

10 :





2015. :

			%
	5.782.881	5.719.508	98,9%
/	4.667.168	4.438.016	95,1%
	1.968.853	1.915.640	97,3%
/	4.570.475	4.258.428	93,2%
K	16.989.377	16.331.592	96,1%

, 98,9%

, 93,2%.

2014. 2015.:

()	2014	2015
	15.928.795	16.989.377
	15.179.623	16.331.593
%	95,3%	96,1%

2015. ,

2015.

1.058

754.809,44 . ,

1.398

2.353.250,45

4.609

5.639



,
 ;
 ;
 ;
 ;
 ;

2015.

e	()	(%)
	1.561.767,95	30,7%
	679.247,56	13,4%
	850.434,02	16,7%
.10	455.485,23	9,0%
	1.538.705,01	30,3%
	5.085.639,77	100,0%

2015. 5.085.639,77

9.230.078,00 , 55,1%



2015.

，

·

-

19., (“ .

” . 94/15) 56. ”

“， - .

2015. ，

” “ . . ， :

- ;
- ;
- ;
- 2015.



	2015	2014
	81.862.120	68.572.207
	12.727.687	9.691.830
	721.129	758.125
	513.570	810.170
	94.589.807	78.264.037
	79.997.883	63.592.631
	35.434.161	35.434.161
	11.779.891	11.779.891
	28.814.249	12.506.966
	3.969.582	3.871.613
	7.815.666	8.022.606
	3.971.295	4.270.479
	2.804.963	2.378.321
	9.633	14.972
	94.589.807	78.264.037

.1 (001)

146.726.789 , 64.864.669 , 31.12.2015. , (001):
 , , , 81.862.120 .
 (002+ 008): 31.12.2015.

		01.01.2015.		(31.12.2015.)			31.12.2015.
014		2.273.583	18.440	364.841	-	-	1.927.182
015		0	6.216.222				6.216.222
020		3.419.181	-	-	-	-	3.419.181
021		108.807.889	1.533.445	51.682.379	-	-	58.658.955
022		16.665.302	247.034	9.146.225	141.949	110.712	7.734.874
027		682.015	357.067	-	-	-	1.039.082
		131.847.970	8.372.208	61.193.445	141.949	110.712	78.995.496



a ,
 e .
 6.216.222
 (10.000.000€)
 ”
 “ . 2012. .
 .1 ,
 () 35%
 (,),
 01.01.2013. .
 5 (. . .
 .8/12)
 , 012- -2396/15 11.12.2015. .
 . 2013. 2014.
 : 2013. . 1.988.570 , 2014. .
 2.093.078 , 2015. . 2.134.574
 .
 1.533.445 :
 -
 1.490.068
 - () 43.377 .
 - 247.034 , : ,
 , .
 () , o
 II .
 (021) :
 25.804 ,



-

,

:

01.01.2015. . -	3.271.289 KM
31.12.2015. .	-500.000 KM
2015. .	-1.000.000 KM
31.12.2015. . -	1.771.289 KM

-

(„

“ „

“ . .

„ „

“ . .

„...)

4.851.467 ,

3.781.936 .



..., .., ..

31.12.2015. , :

			31.12.2015.	31.12.2014.
			2	32
	3	40	6.004.938	3.138.955
	4	46	3.509.176	3.010.472
	5	56	721.129	758.125
	6	59	11.077	4.494
	7	60	513.570	810.170
		31	12.727.687	9.691.830

.2-

(118-133),

, .., .. :
 (, , , , , , ,) , ,

.3-

(104-106)

, .., .. :
 , , , , , , , , , ,



11.049.074 ,

5.044.136 ,

6.004.938 .

:

1	31 -	2.101.745
2	21 -	1.106.319
3	11 -	232.171
4	01 -	1.995.322
		5.435.557

(),

31.12.2015.

52.696,22

1.321.372,03

32 - : (11) 39 -

(

),

04- -7777/3-15 05.11.2015.

1.701.446

716.055

2003. 2004.

(



.4-

3.500.000 , 9.176

03-1660/2015

11.11.2015. , 16.11.2015. . .

500.000 ,

.5-

31.12.2015. , 721.129 .

EUR

je

9.458 ,

.6-

11.077 .

.7-

,
KfW .



31.12.2015. :

			31.12.2015.	31.12.2014.
	8	102	35.434.161	35.434.161
	9	112	7.086.832	7.086.832
	9	113	4.693.059	4.693.059
	9	115	28.814.249	12.506.966
	10	119	3.871.613	2.561.457
	10	120	97,969	1.310.156
	11	126	7.815.666	8.022.606
	12	136	3.971.295	4.270.479
	13	144	2.804.963	2.378.321
		164	94.589.807	78.264.037

.8 -

	65%	23.032.205
.	10%	3.543.416
.	5%	1.771.708
-	20%	7.086.832
	100%	35.434.161

. 057-0- -11-002813,

31.12.2015.

.9 -

(151).

31.12.2014. ,



, .

(93).

31.12.2014. ,

:

	31.12.2014.	12.506.966
/		16.307.283
	31.12.2015. ∴	28.814.249

.10 –

2014.

:

1.988.570

KfW (

2013.);

375.668

2013. – 2014. (2014.)

2014.

KfW

2014. 1.289.940 , () 20.216 ,

1.310.156 .

01.01.-31.12.2015.. :

(68.227
)	29.742
:	97.969



. 11 -

19 (19),

7.560.302 .

. 12 -

2011. ,
2012. . 105.671SDR (263.063
31.12.2015.).

SDR 2.546.300 3.666.672USD.

SDR
()
31.12.2015. 310.353 .
(15.04. 15.10)

2015. . 98.564 .



:

		31.12.2015.	31.12.2014.
1		526.125	493.260
1	2	526.125	493.260
3	5	1.578.376	1.479.779
	5	1.866.794	2.243.440
		4.497.420	4.709.739

. 13 -

		31.12.2015.	31.12.2014.
	147	526.125	439.260
	151	504.896	435.667
	153	935.533	638.809
	154		
	157	550.068	531.193
	158	33.801	35.830
	159	188.881	200.297
	160	56.026	82.293
	162	9.633	14.972
		144	2.804.963
			2.378.321



2016. .



–

31.12.2015. .



31.12.2015. .

26.10-

10.11.2015. ,

43.369,41 .

18.798,34 (

).



•

31.12.2015.

•

:

,

•

31.12.2015.

•

:

,

•

:



	2015	2014
	14.619.795	14.189.558
EBITDA	2.915.241	3.595.230
	2.786.067	2.197.067
EBIT	129.174	1.398.163
	106.238	99.432
	22.936	1.298.731
	0	0
	29.742	1.289.940
	331	326
	44.168,56	43.526,25

01.01.-31.12.2015. .

		2014	2015	2015	(5/3)	(5/4)
1	2	3	4	5	6	7
		16.620.209	17.555.000	16.908.895	102	104
611	<i>a aje</i>	14.189.558	15.955.000	14.619.795	103	109
		10.818.472	12.235.000	11.311.728	105	108
		2.290.285	2.500.000	2.345.132	102	107
		1.080.801	1.220.000	962.935	89	127
621		1.793.862	1.100.000	1.731.866	97	64
652		188.527	200.000	237.645	126	84
661		329.197	250.000	230.662	70	108
662		125	0	209	167	0
676		2.000	0	1.316	66	0
679		116.940	50.000	87.403	75	57
		15.330.269	17.532.800	16.879.153	110	104
511		1.388.077	1.350.000	1.302.582	94	104
512						
513		1.409.648	1.400.000	1.528.582	108	92
520		5.107.624	5.248.000	5.416.557	106	97
	-	3.016.706	3.100.000	3.208.760	106	97
	-	43.210	46.000	32.304	75	142
	-	244.925	256.000	266.448	109	96



	-	1.702.110	1.744.000	1.809.178	106	96
	-	100.673	102.000	99.866	99	102
521		2.446.314	2.450.000	2.331.638	95	105
522		66.602	70.000	64.161	96	109
523						
524		449.522	500.000	374.115	83	134
525						
529						
531		274.843	275.200	293.276	107	94
		5.127	5.200	2.478	48	210
		269.716	270.000	290.798	108	93
532		210.047	220.000	246.392	117	89
535		25.723	25.000	22.433	87	111
539		53.492	53.600	55.982	105	96
540		2.190.849	2.200.000	2.761.101	126	80
541		6.218	19.000	24.966	402	76
550		463.765	490.000	338.686	73	145
		34.215	34.000	30.716	90	111
		291.023	290.000	278.685	96	104
		20.734	40.000	20.084	97	199
		6.000	6.000	6.000	100	100
		111.793	120.000	3.201	3	3.749
551		28.892	29.000	26.992	93	107
552		111.740	120.000	89.692	80	134
553		21.377	22.000	18.153	85	121
554		18.350	19.000	17.882	97	106
555		32.531	35.000	34.181	105	102
556		90.893	135.000	149.653	165	90
559		312.366	120.000	282.511	90	42
560		0	2.196.000	0		
561		99.432	100.000	106.238	107	94
562		313.316	80.000	310.457	99	26
570		42.838	60.000	31.237	73	192



576		878	1.000	888	101	113
578		142.649	270.000	72.950	51	370
579		21.251	45.000	106.688	502	42
580		0	0	375	0	0
581	,	0	0	160.692	0	0
584	. .	1.032	0	0	0	0
588		0		710.095	0	0
	-					
		1.289.940	22.200	29.742	2	75

(134) :

-
-
-

16.908.895 (301)

-

.14-

:

-
-
-
-
-

(), ().



2014.

697.629 :

- 570.514 (306.738)
2013. . 263.776)

- 127.115 (68.930

2013. . 58.185

).

2014. .

.15 -

, , 1.731.866 .

.16 -

237.645 .

.17 -

: - 25.601 ,

205.060

209 .

.18 -

:

,

88.719 .



16.879.153 (302).

. 19 -

(139)

, ,
(, , ,
, , ,).

. 20 -

(219)

(140)

: ,

, (219) 8.186.470
(5.416.556 + 2.769.914).

. 22 -

(93)

(100

).



:

	1-4%
	5-20%
	2-12,50%
	8-14,30%
	14,30%
	5-20%
	20%

31.12.2014.

1.1.2015.

72.647.179

31.12.2014. :

1		3.577.156	5.288.309	1.711.153
2		44.592.261	58.262.732	13.670.471
3		8.263.322	9.096.138	832.816
		56.432.739	72.647.179	16.214.440

2015.

2.761.101

.23 -

:

	31.12.2015.	31.12.2014.
(, , ,)	338.686	463.765



	26.992	28.891
	89.692	111.740
	18.153	21.377
(, , ,)	17.882	18.350
(, , 04-5050/13 ,)	282.510	312.367
	773.915	956.490

.24 –

	31.12.2015.	31.12.2014.
(, ,)	34.182	32.531
(, ,)	149.653	90.893
	183.835	123.424

2015.

(1,5% 1,5%)

31.12.2015. .



. 25 -

98.564 , (15.04. 15.10.)
 7.674 .
 310.457 ,
 SDR () 31.12.2015.
 SDR = 2,489439KM.

. 26 -

: , ,
 , ,
 , ,
 , ,
 , ,
 31.12.2015. 107.576 . 96.581
 1997.
 , , 161.067
 , 104. 2.
 ()
 31.12.2015.
 710.095 .



	2015	2014
	14.697.662	13.144.704
	12.555.240	12.669.619
()	2.142.422	475.085
	1.235.285	1.333.767
	467.111	110.740
()	768.174	1.223.027
	0	0
	2.947.695	2.254.971
()	-2.947.695	-2.254.971
	15.932.947	14.478.471
	15.970.046	15.035.330
()	-37.099	-556.859
	758.125	1.314.902
	208	125
	105	43
	721.129	758.125

. 27 -

37.099

. 28 -



	2015		2014	
	2015	2014	2015	2014
EUR	3.513	13.759	-	-
USD	1.021	917	-	-
RSD	353	354	-	-
SDR	-	-	4.497.420	4.709.739
	4.887	15.030	4.497.420	4.709.739

SDR ().

10%

SDR:

	2015		2014	
	10%	-10%	10%	-10%
SDR	449.742	(449.742)	470.974	(470.974)
	449.742	(449.742)	470.974	(470.974)



.29-

31.12.2015.

267.000 .



2015.

2015.

2.101.600,89 .

():

	2015	
	269.883	12,8%
	131.448	6,3%
	101.609	4,8%
	1.598.661	76,1%
	2.101.600,89	100,0%

,

1.598.661

76,1%

.

,

23,9%